

MOHAVE COUNTY DEVELOPMENT SERVICES DEPARTMENT
BUILDING DIVISION

ATTACHED OPEN PATIO COVER WITH RAISED PORCH/DECK CONSTRUCTION

Please provide the information requested below and CHECK the appropriate details on each page for your project. Use the Tables to determine Joist and Beam Sizes

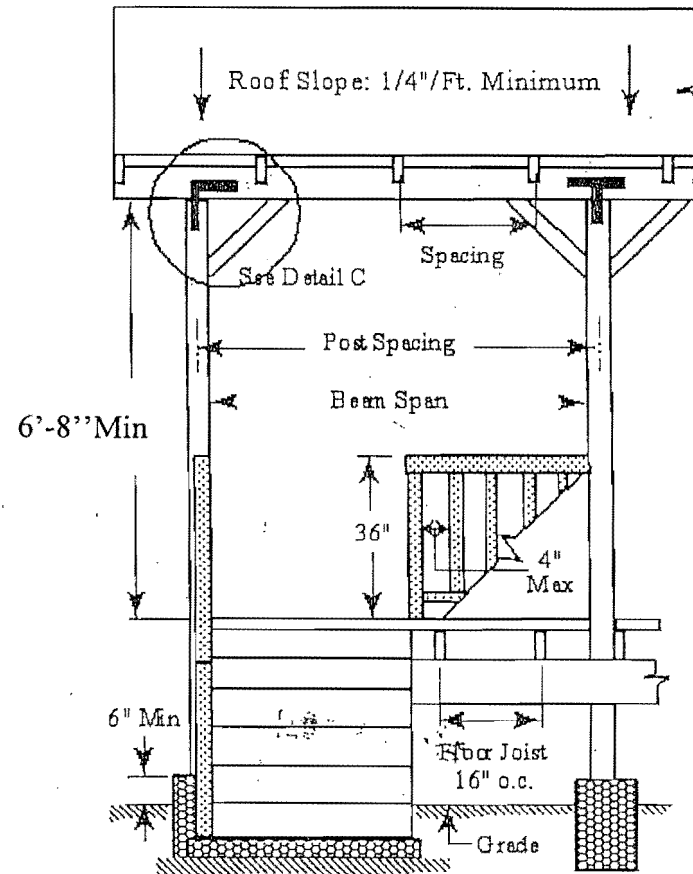
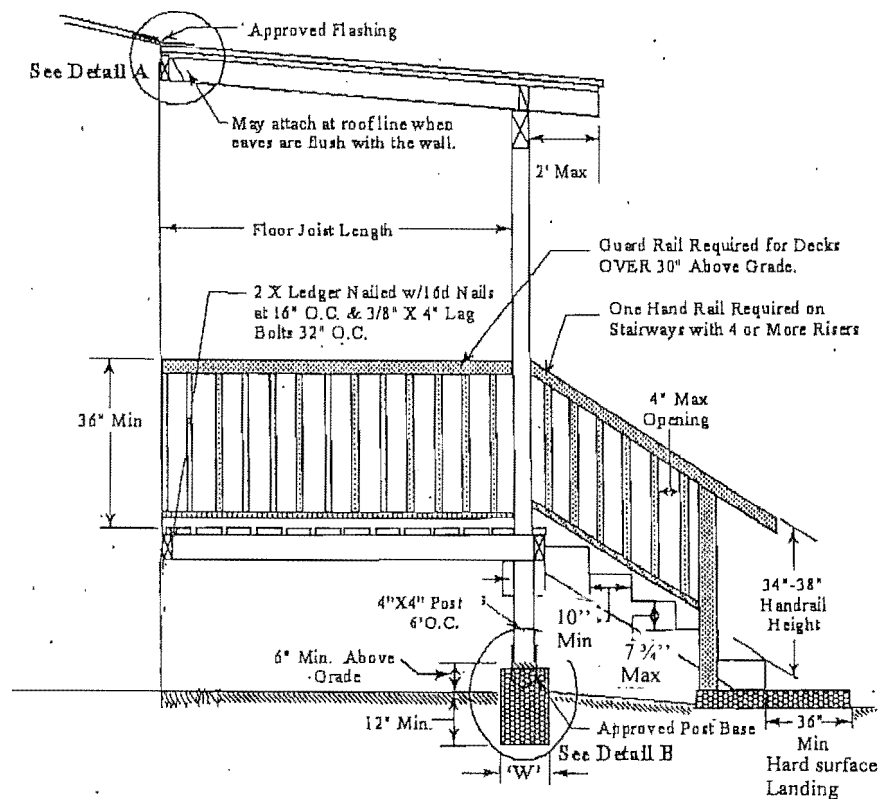
DECK DIMENSIONS _____ X _____ ROOF: RAFTER SIZE _____ X _____ SPAN _____ SPACING _____ O.C.

BEAM SIZE _____ X _____ ROOF SHEATHING _____ ROOF COVERING _____ DECK: JOIST SIZE _____ X _____

LENGTH _____ FLOOR BEAM TYPE: SOLID ☐ OR 2-2x'S ☐ SIZE _____ X _____ BOLT DIAMETER _____

AND/OR POSTS ☐ POSTS: SIZE _____ X _____ SPACING _____ ft. _____ in. FOOTING SIZE _____ X _____ DECK FLOORING _____

NOT FOR MOBILE OR MANUFACTURED HOMES

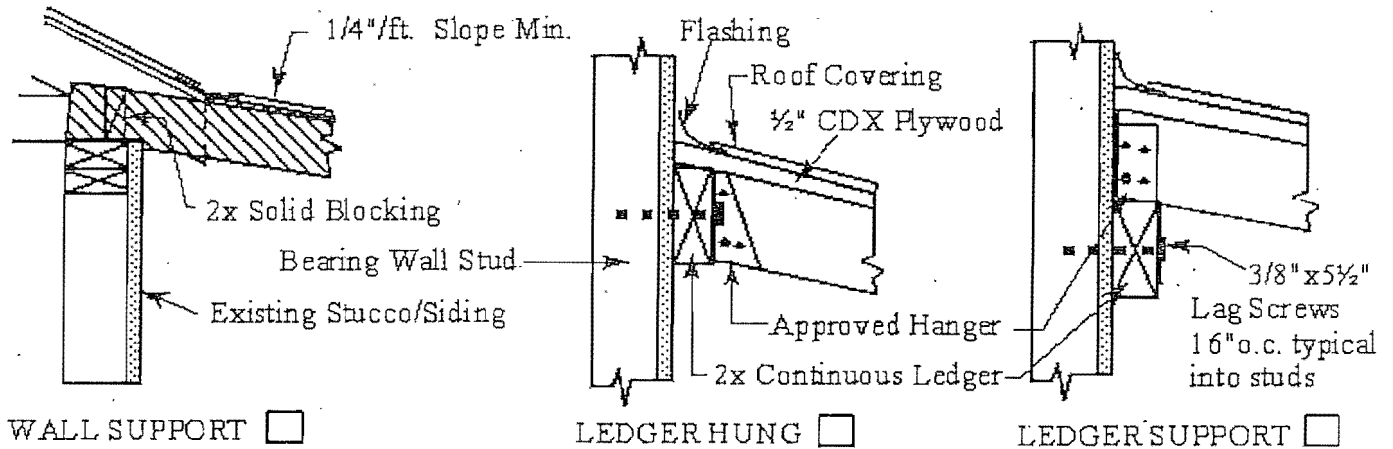


Updated 12-14-2011

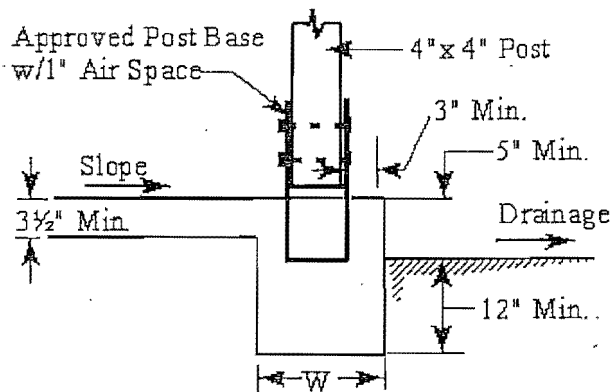
ATTACHED OPEN PATIO COVER CONNECTION DETAILS

Please CHECK the appropriate Boxes for Supports (Detail A) and Connections (Detail C) for your project

'DETAIL A' WALL CONNECTION (See Notes 6 & 7 Below)



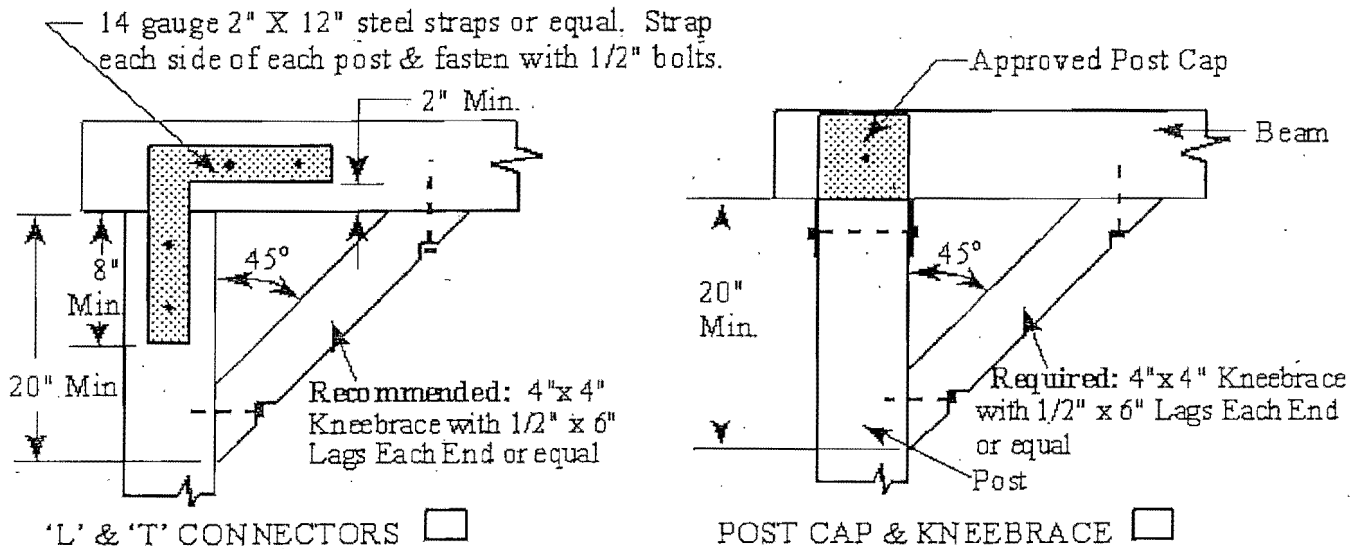
'DETAIL B' FOUNDATION



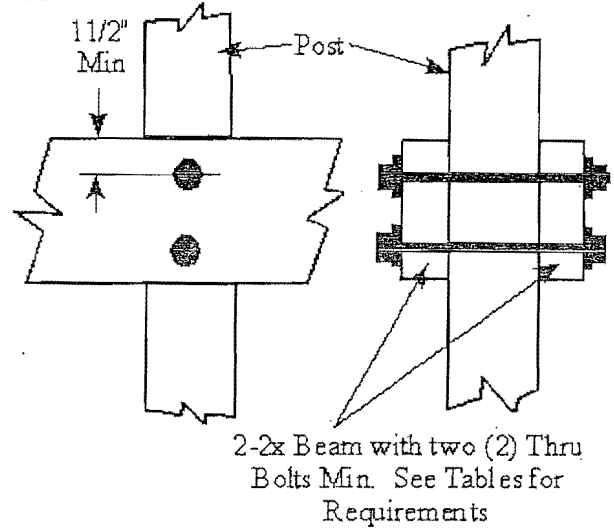
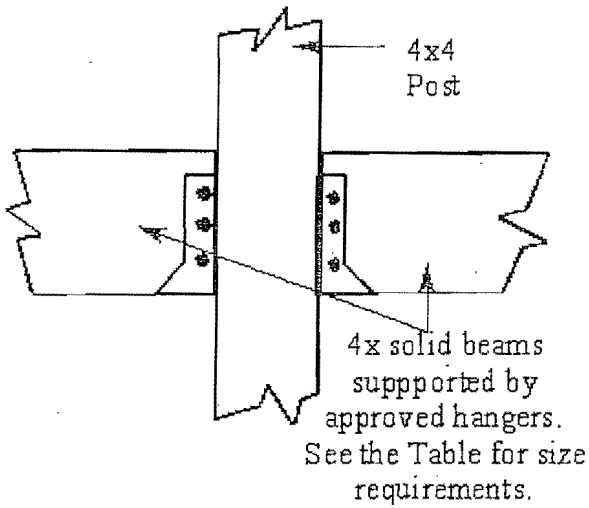
NOTES

- (1) Beams supporting rafters spanning longer than 15' 6" require justifying calculations.
- (2) Light Roof Covering is lattice, aluminum, or fiberglass (3#/sq.ft. Maximum load)
- (3) Heavy Roof Covering is approved roofing materials over wood sheathing (10#/sq.ft. Max. Load)
- (4) Roof Slope: Minimum 1/4" per foot.
- (5) Ledgers shall be fastened with 3/8" x 5 1/2" lag screws secured into existing bearing wall studs or top plates.
- (7) Attachment to fascia board requires a justifying design.

'DETAIL C' CONNECTIONS/LATERAL BRACING



DETAIL D



SOLID BEAM WITH APPROVED HANGERS □

TWO MEMBER BOLTED BEAM □

CONCRETE FOOTING SIZE 'W'					TWO MEMBER BEAM BOLTING SIZE REQUIREMENTS				
Post Spacing	Floor Joist Length				Floor Beam up to:	Floor Joist Length			
	6'	8'	10'	12'		6'	8'	10'	12'
6'	14" X 12"	14" X 14"	16" X 16"	14" X 14"	6'	2 - 3/8"	2 - 3/8"	2 - 1/2"	2 - 1/2"
7'				14" X 14"	8'	2 - 3/8"	2 - 1/2"	2 - 1/2"	2 - 3/4"
8'				18" X 18"	10'	2 - 1/2"	2 - 1/2"	2 - 3/4"	2 - 1"
9'					12'	2 - 1/2"	2 - 3/4"	2 - 1"	2 - 1 1/4"
10'	14" X 14"	18" X 18"	20" X 20"	20" X 20"					
11'									
12'									

FLOOR JOIST LENGTH		FLOOR BEAM SIZE (GRADE DF-L No 1)								
SIZE DF-L No. 2	MAXIMUM LENGTH AT 16" O.C.	FLOOR JOIST LENGTH	BEAM SPAN (DISTANCE BETWEEN SUPPORTS)							
			6'		8'		10'		12'	
2" X 6"	9' 9"	6'	4"X6"	2-2"X6"	4"X6"	2-2"X6"	4"X8"	2- 2" X8"	4"X8"	2-2"X10"
2" X 8"	12' 10"	8'	4"X6"	2-2"X6"	4"X6"	2-2"X6"	4"X8"	2- 2" X8"	4"X10"	2-2"X10"
2" X10"	16' 5"	10'	4"X6"	2-2"X6"	4"X6"	2-2"X8"	4"X8"	2-2"X10"	4"X10"	2-2"X12"
		12'	4"X6"	2-2"X6"	4"X8"	2-2"X8"	4"X8"	2-2"X10"	4"X10"	2-2"X12"

